

السادة أعضاء جمعية رجال الأعمال المصريين الأفارقة المحترمين

استكمالاً للجهود المستمرة والعلاقات المتميزة التي تربط جمعية رجال الأعمال المصريين الأفارقة بشركائها الاستراتيجيين، وحرصاً على تعزيز التعاون الدولي وفتح آفاق جديدة أمام مجتمع الأعمال المصري والأفريقي، فقد ورد إلى الجمعية من سفارة سريلانكا بالقاهرة عرض تعاون من شركة Alumex PLC، الرائدة في مجال تصنيع قطاعات الألومنيوم المبتوق (Aluminium Extrusions) وعضو مجموعة Hayleys Group، والتي تسعى إلى توسيع أعمالها في السوق المصري وإقامة شراكات مع الشركات العاملة في قطاع الألومنيوم والإنشاءات.

وتستهدف الشركة التعاون مع مستوردي وموزعي قطاعات الألومنيوم، والمصنعين، وشركات الواجهات الزجاجية (Curtain Wall)، وشركات المقاولات والتطوير العقاري، وذلك في إطار خطتها للتوسع الدولي وتعزيز حضورها في الأسواق الإقليمية.

وتتمتع الشركة بأكثر من 40 عامًا من الخبرة في صناعة قطاعات الألومنيوم، وتمتلك منظومة تصنيع متكاملة، مع القدرة على تصميم وإنتاج قطاعات مخصصة للتطبيقات الصناعية والمعمارية، إلى جانب توفير تشطيبات عالية الجودة، ومواعيد توريد تنافسية، وإمكانات تصديرية قوية.

رئيس مجلس إدارة جمعية
رجال الأعمال المصريين الأفارقة

الشقاوي



الأمين العام لجمعية
رجال الأعمال المصريين الأفارقة

مصطفى الامير

م / مصطفى الامير



Precision Cutting



Drilling & Tapping



Bending



Welding



Punching



Routing



Stamping



Assembling



Laser Cutting
& Engraving

ABOUT ALUMEX

About Us

Alumex PLC, established in 1986, is Sri Lanka's leading fully-integrated manufacturer of aluminium extrusions.

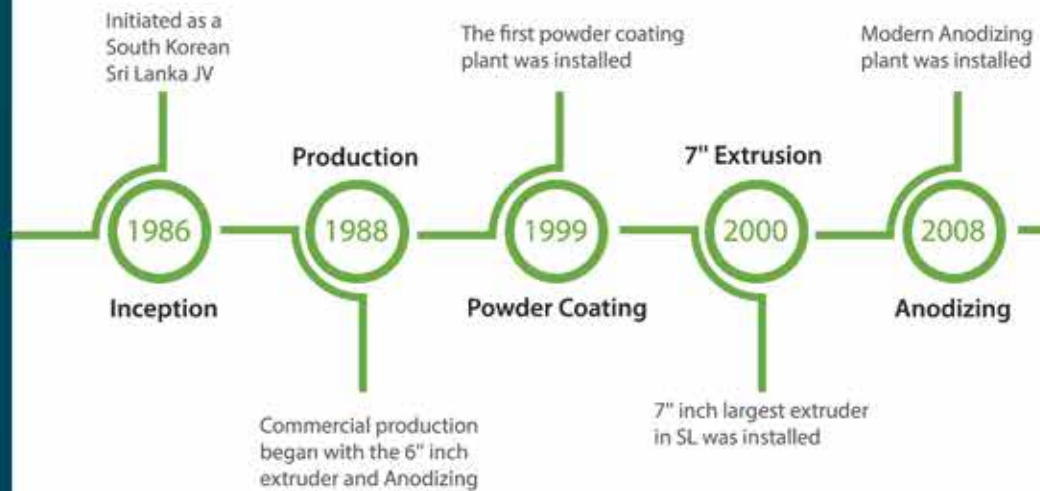
From architecture to industry, Alumex delivers value-added aluminium solutions worldwide. With ISO-accredited processes and advanced surface coatings, we bring sustainable, customized products that set the standard for international quality.

Who We Are

Leading manufacturer of aluminum Extrusion in Sri Lanka since 1986.

Purpose

Together, we elevate living through sustainable and innovative Aluminium solutions.



Core Values (HAYLEYS-I)

H

Honesty and Integrity

Ethical and transparent in all our dealings.

A

Accountability

Holding ourselves responsible to deliver what we promise.

Y

Yes, WE can!

Teamwork across boundaries to make things happen. Yes, WE can! - Teamwork across boundaries to make things happen.

Markets Served

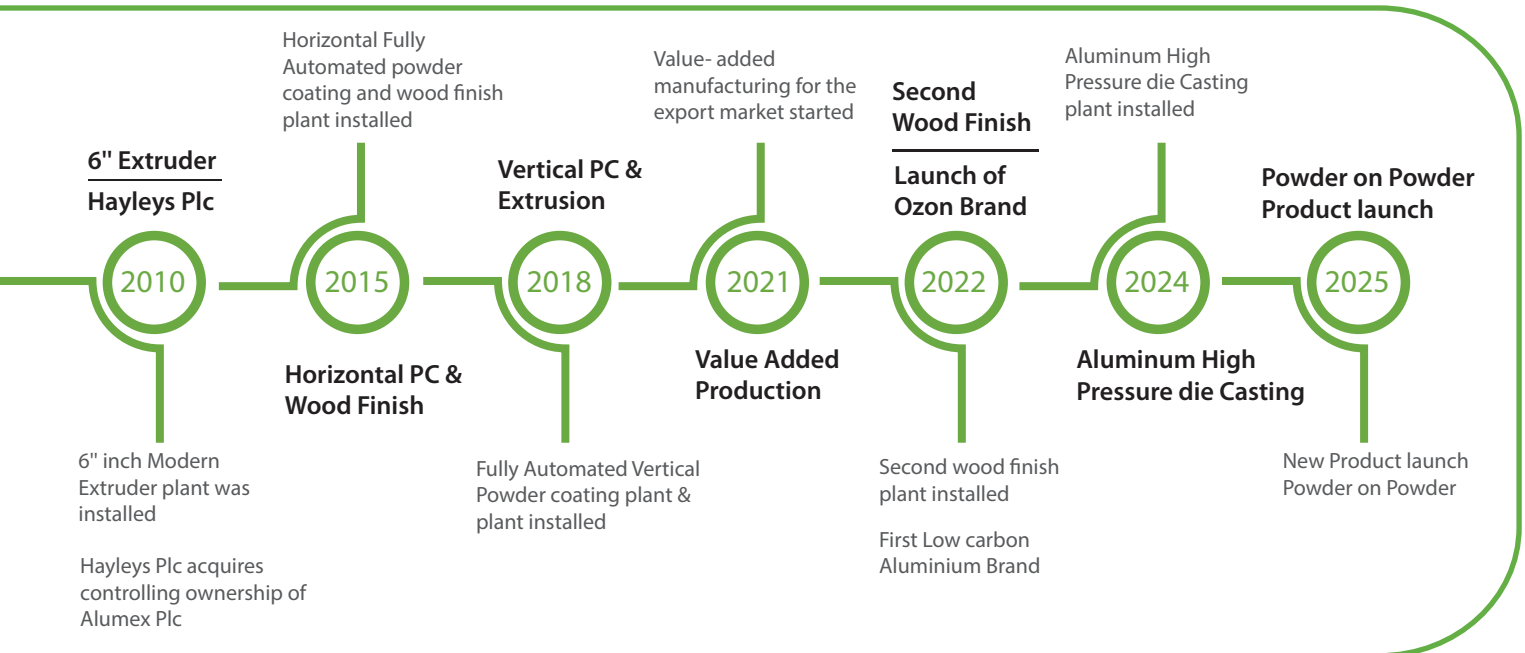


Vision

To be the premier aluminium extrusion manufacturer in the South Asian region.

Mission

Create customer intimacy with innovative Aluminium solutions through world-class, sustainable manufacturing practices.



L

Love for humanity
Respecting and developing our people.

E

Enduring Customer Value
Enhancing experiences from rural farmers to global consumers.

Y

Yes, we WILL WIN!
The will to win for Hayleys and its shareholders.

S

Social Responsibility
Caring for communities and acting environmentally responsibly.

I

Innovation
Transforming ideas into value across economic, social, and environmental dimensions.

MELTING & BILLET MANUFACTURING

At Alumex, we produce aluminum billets that meet a variety of industrial needs. Our billets are designed to ensure precision, durability, and performance in the creation of customized aluminum

profiles. With an emphasis on quality and consistency, our standard aluminum billets are available in a range of alloy tempers and dimensions to support your unique manufacturing requirements.

Standard Billet Specifications

Billet Diameter 
6" logs | 7" logs

Standard Billet Length 
5800 mm

Alloy Types 
6063 | 6060 | 6005 | 6061
6082 | 6005A | 6106 | 6261

Introducing Ozon Alumex's Low Carbon Aluminium Solution



As a part of our sustainability efforts, Alumex has introduced Ozon, our exclusive line of Low Carbon Aluminium billets produced at our melting facility

using eco-friendly technologies, Ozon billets help reduce energy consumption while using 70% of recycle aluminum scraps and maintaining the Alumex quality standard. Ozon billets are perfect for environmentally conscious applications, offering a balance of premium quality and reduced carbon impact.

 **OZON® Low Carbon Aluminium**
First Low Carbon Aluminium brand in Sri Lanka

 **Capacity**
12,000 MT per year



DIE DESIGNING AND MANUFACTURING

At Alumex, we take pride in having our own dedicated die manufacturing unit. This in-house capability allows us to design and produce custom dies with precision, ensuring faster lead times and superior quality control for all extrusion processes. Our die manufacturing unit is equipped with advanced technology, enabling us to tailor dies to meet the exact specifications of our customers' aluminum profiles.

Key Benefits of Our In-House Die Manufacturing



Die Manufacturing Capabilities

- CAD Drawings ✓
- CAM Programming ✓
- 3D Modelling ✓
- Tooling Life Management ✓



ALUMINIUM EXTRUSION





We are capable of extruding any profile up to a circumscribing diameter (CCD) of 260 mm.

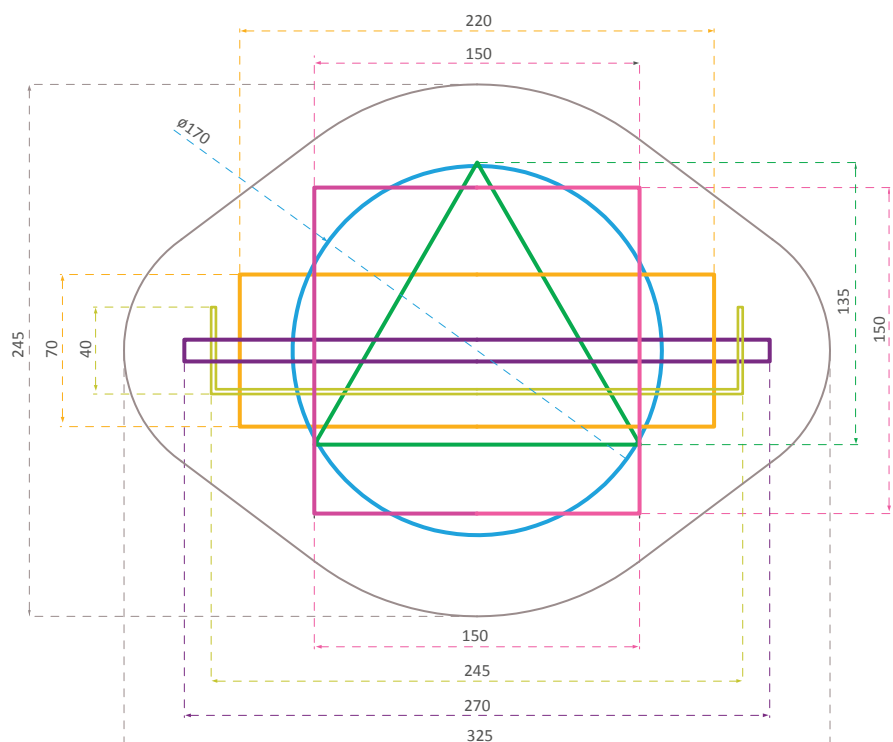
Our extrusion plants are equipped with a range of high-performance extruders, including one Italian-made Presezzi extruder

These advanced systems benefit from automated downstream equipment, long run-out tables, and Infrared/Bluetooth technology controls. Alumex PLC's extrusion capabilities include:

Plant	Press Size	Press Force	Capacity (MT p.a)
Alumex	7"	20mN	5,742 MT
Alco	6"	13.7mN	4,158 MT
Prime	7" / 8"	23mN	9,720 MT

Profile Range

- 
Standard
- 
Customized
- 
Architectural
- 
Hardware
- 
Household
- 
Industrial





ANODIZING

Aluminum anodizing is a key process that enhances the natural oxide layer on aluminum surfaces, providing greater corrosion resistance, and improved surface hardness, and surface protection. At Alumex, we specialize in anodizing aluminum profiles, offering durable and aesthetically finishes suitable for a wide range of industries, including construction and automotive. Our anodizing process not protects the

aluminum but also provides the option for a variety of colors and textures, making it an excellent choice for customers who prioritize both functionality and design.

With our anodizing services, we ensure that our aluminum products meet the highest standards of durability, quality, and visual appeal for various applications.



Key Specifications



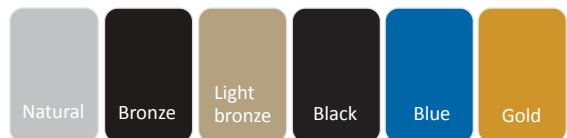
Total Capacity
5,346 MT



Maximum Length
6.5 meters (21 feet)



Anodizing Colors



Certifications



POWDER COATING

Alumex is home to South Asia’s first vertical powder coating facility, significantly increasing our coating capacity to 16,000 MT per Year.

We have earned the prestigious QUALICOAT and QUALICOAT SEASIDE certifications, ensuring our powder-coated products meet world-class quality standards.

Our fully automated vertical and horizontal powder coating facilities deliver precision and efficiency, providing premium-quality finishes to meet all customer requirements.

★ Certifications



Warranty
Up to
30 Years



length
Upto
24 feet



General Coating
Thickness
60-80µm



Colours
Full RAL
color range



Plants
04



Capacity
16,000_{MT}



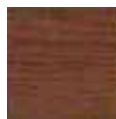


Our WoodEx process transforms aluminum profiles with stunning finishes that mimic the beauty of wood, marble, and granite. By integrating a robust protective coating with a decorative look, WoodEx serves as an exceptional alternative to traditional architectural materials. With outstanding weather resistance and minimal maintenance requirements, it stands out in performance and aesthetics. Each profile undergoes a meticulous process: starting with a powder-coated base color that complements the desired wood texture, the profile is then wrapped in a textured sublimation film and treated in an oven, allowing for sublimation to imprint a realistic wood finish.

Available Colors



DW-3011DQ



DW-3022DQ



DW-6044DQ



DW-9088DQ



DW-4044DQ

Key Features

Production Capacity
1425 MT across 2 Wood Finishing facilities.

Wood Sublimation Film
Sourced from Italy.

Final Product Warranty

We provide a comprehensive warranty of 5 years as standard and 10 years on demand, ensuring your investment is protected



Aesthetic Appeal



Variety of Wood Grain Patterns



Durability and Strength



Environmentally Friendly



Versatile Applications

WOOD FINISH
WoodEx

SATIN FINISHING



Specialized Satin Finishing Services

Tailored for aluminum profiles post-extrusion.



Advanced Finishing Process

Uses stainless steel shot with a grit size of 0.15–0.25.



Enhances surface texture for anodizing and powder coating.



Precision & Consistency

Delivers high-quality finishes that meet both aesthetic and functional requirements.



Guaranteed Results

Expertise in satin finishing ensures outstanding and reliable outcomes.



Capacity

9000 MT per annum



Rustic Coating brings the beauty of natural wood to aluminum profiles with a durable dual-layer finish.

Authentic wood grain aesthetics combined with superior UV resistance, corrosion protection, and strength—perfect for interiors and exteriors, even in tropical or coastal climates.



Superior UV Resistance
Protects colour and finish from fading.



Exceptional Corrosion Protection
Performs even in coastal conditions.



High Mechanical Strength
Resists wear, impact, and deformation.



All-Weather Durability
Perfect for interior and exterior use.



Sustainable Alternative
Eco-friendly and low-maintenance timber look.



Rustwood



Stonewood



Cinnamonwood



Honeywood



Wheatwood



Darkwood



Sandwood



Coffeewood



RUSTIC FINISH

Comparison of Rustic Wood VS Sublimation

Feature	Rustic Wood with Pattern Drum	Wood Sublimation
Definition	Dual-layer powder coating with a secondary pattern applied via drum (not sprayed)	Transfer of wood grain design via heat and vacuum sublimation film
Finish Type	Patterned or textured decorative effect (marble, stone, abstract wood, etc.)	Realistic wood grain imitation (teak, oak, walnut, etc.)
Customization	High	Moderate
Surface Feel	Textured or embossed	Smooth to lightly textured
Durability & Weather Resistance	Excellent High UV, corrosion, and scratch resistance	Good Requires UV-resistant top coat for outdoor use
Visual Appearance	Artistic, textured, can mimic stone, wood, or custom effects	Natural wood look with grain accuracy
Cost	Medium More cost-effective for high volumes	Higher Due to film material and processing steps
Environmental Impact	Low Recyclable powders, no VOCs	Slightly higher Film waste and additional heat cycles
Typical Applications	Facades, designer panels, premium furniture components	Doors, windows, garden furniture, traditional wood-effect facades

Comparison of Rustic Wood VS Powder Coating

Aspect	General Powder Coating	Rustic Wood ProcessSublimation
Coating Layers	Single-layer (base or top coat)	Dual-layer (base + top coat)
Durability (UV, Weather)	Good	Excellent better outdoor performance
Gloss & Texture Range	Limited	Wide variety matte and textured

MORE THAN EXTRUSION

ALUMEX'S VALUE ADDITION

At Alumex, we believe that aluminum offers tremendous potential beyond just extrusions. Our commitment to enhancing the value of aluminum encompasses a range of advanced processing techniques that meet diverse customer needs.

By integrating additional services into our production, we transform aluminum into versatile solutions tailored for various applications. This comprehensive approach ensures that our customers receive high-quality aluminum extrusions and fully integrated solutions that streamline their production processes.



Bending



TIG & MIG
Welding



Assembling



Precision
Cutting



Punching



Buffing



Tapping



Routing



Chamfering



Drilling



CNC Machining



Laser Cutting
& Engraving



Packaging Solutions



Custom export packaging
(crates, pallets, boxes)



Container loading
and optimization



Heavy-duty
export-grade materials

MORE THAN EXTRUSION

ALUMEX'S SHEET FABRICATIONS

Alumex Group excels in delivering premium aluminium sheet fabrication services tailored to the unique needs of the global market. Designed to meet the requirements of contractors, builders, architects, and large-scale project managers, our fabricated sheets provide strength, durability, and aesthetic appeal for various applications.

From intricate architectural designs to robust industrial components, our fabrication capabilities include cutting, bending, and welding, supported by the latest technology and expert craftsmanship. We produce aluminium sheets with consistent thickness, superior finish, and exceptional durability, ensuring every product meets international quality standards.



Construction and Infrastructure



Signage and Retail



Industrial Applications

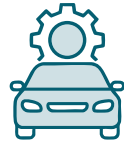


Consumer Goods and OEM Applications

MORE THAN EXTRUSION HIGH PRESSURE DIE CASTING

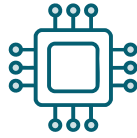
Applications Across Industries

Our High Pressure Die Casting solutions serve a wide range of industries, including:



Automotive

Engine components, housings,



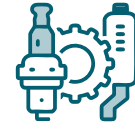
Electronics

Heat sinks, enclosures, connectors.



Renewable Energy

Frames and mounts for solar and wind energy systems.



Industrial

Machinery parts, tools, and various other components.

Our Capabilities



High-Volume Production

Equipped to manage large-scale manufacturing with efficiency.



Precision Engineering

Delivering consistent quality and accuracy in every casting.



Customization

Offering tailored solutions to meet a wide range of client needs.



Value-Added Services

Comprehensive services including machining, assembly, and surface finishing options such as vibratory shot blasting, sand belt finishing, pneumatic filing, sandblasting, powder coating, and anodizing - ensuring complete, ready-to-use components.

Post Processing



Machine Model	Clamping Force (kN)	Mold Thickness (mm)	Max Casting Area (cm ²)
HDC 350	3,500	250–700	875
HDC 450	4,500	300–750	1,125



Why High-Pressure Die Casting Matters For Your Business

 **Lightweight and Durable**

 **Cost-Effective**

 **Versatile**

Specification	Unit	HDC 350	HDC 450
Clamping Force	kN	3500	4500
Clamping Stroke	mm	460	550
Ejection Force	kN	180	200
Ejection Stroke	mm	110	130
Mold Thickness (Min–Max)	mm	250–700	300–750
Casting Pressure (Intensified)	MPa	194 / 135 / 99	168 / 124 / 95
Casting Area	cm ²	194 / 135 / 99	268 / 363 / 474
Maximum Casting Area (at 40 MPa)	cm ²	875	1125
Injection Position	mm	-125 / -140	-175

MORE THAN EXTRUSION

ALUMEX SOLAR



Key Advantages

Lightweight yet high-strength aluminum components



Corrosion-resistant and maintenance-free



Flexible design options with minimal connections



Pre-assembled parts to reduce labor and installation time



Readily available ex-stock for faster project execution



Alumex offers a complete range of high-performance solar mounting solutions engineered for both ground and rooftop installations. Designed using 100% premium-grade aluminum, our systems are lightweight, corrosion-resistant, and built for durability in all weather conditions.



Roof mounting Structure

The Alumex Solar Ground Mounting System is engineered for speed and reliability. Featuring pre-assembled rafters and factory-machined legs and purlins, it eliminates the need for on-site welding or cutting, significantly reducing installation time and cost. Ideal for concrete strip foundations or ground screw applications, this system offers a robust yet lightweight solution for ground-based solar arrays.



Ground mounting structure

Alumex Roof Mounting Systems and accessories are designed to simplify the installation process while ensuring long-term performance. Built with precision-extruded aluminum, our clamps, connectors, and supports offer superior strength, stability, and corrosion resistance.

These systems support flexible design requirements, reduce part complexity, and maintain structural integrity even under wind and load stresses - making them the preferred choice for efficient and secure rooftop solar projects



ALUMEX'S FACILITIES



Manufacturing Facilities

 Makola
Main Manufacturing Plant

- 6" and 7" extrusion lines
- Anodizing
- Horizontal Powder Coating
- Wood Finishing Line

 Makola
Lindel Manufacturing Plant

- Value-added Fabrication Plant
- High Pressure Die Casting Plant
- Sheet Fabrication Plant

 Ekala
Prime Manufacturing Plant

- 7"/8" Extrusion line
- Vertical Powder Coating
- Rustic Finishing Line



Research And Development Facilities



Prototyping



Structural analysis for industrial requirements



3D Printing



Technical service and troubleshooting



Accessory Development for Aluminium Extrusions



Material testing and alternate material development



Feasibility studies for customized architectural, hardware, industrial solutions



Improvement of existing products and processes



Special alloy development for customized products



Supply of specialized accessories and services



Basic Comparison of Aluminium Vs UPVC Vs Wood

Include this table before certification and accreditations

CHARACTERISTICS	PRODUCT		
	ALUMINIUM	UPVC	WOOD
Energy Efficiency	Thermal Conductor but can be done thermal breaks (Polyurethane, Polyamide)	Good thermal Insulation	Natural Insulating, Effective maintaining
Aesthetics	Sleek, Modern appearance wide range of color options	Modern designs Limited color options	Classic look Traditional appearance wide range of colors
Material Characteristics	Light weight Durable Corrosion resistance	Light weight Durable Corrosion resistance	Heavy weight Susceptible to decay Need proper maintenance
Weight	High strength to weight ratio	Light weight Easy to handle	Heavy weight But manageable
Durability	Highly durable Resistant to corrode	Resistant to moisture Doesn't corrode	Need to maintain, need proper care Susceptible to decay warping
Maintenance	Low, cleaning required	Low Maintenance	Higher Maintenance
Cost	More expensive than UPVC Less than high-end wood options	Affordable than Aluminium and some wood	Cost varies, hard wood is expensive than soft woods
Environmental Impact	Energy intensive production But can be recycled	Recycling is challengeable	Renewable and Biodegradable Environmentally friendly
Customization	Easily customizable	Limited customization	Highly customizable
Application	Widely used in commercial buildings 7 Industrial applications	Commonly used to residential	Commonly used to residential
Fire resistance	Non-combustible High fire resistant	Low flammability	Combustible
Longevity	Long-Lasting	Long life span with proper care	Depends on type of wood and maintenance

OUR GLOBAL SOURCING PARTNERS



OUR GLOBAL PROPRIETARY PARTNERSHIP MILESTONES



CERTIFICATIONS & ACCREDITATIONS

Management Systems



Certification for Powder Coating and Anodizing



Green Building Council of Sri Lanka - Green Labeled Product




Sustainability & Responsible Sourcing




ESG & CORPORATE SOCIAL RESPONSIBILITY

Targets for 2030

25%
reduction
GHG emission intensity



30%
reduction
Water intensity



50%
Increase
CSR beneficiaries



50%
Social and environmental
screening of suppliers



 ESG Strategy
Elevate Living

 Community
Projects
Training 3,600+
fabricators

 Low Carbon
Aluminium (OZON®)
initiative

 Environmental
Impact



WHY CHOOSE ALUMEX



Fully Integrated Solutions

From Melting to finished product



Global Reach

6 Continents



Innovation Focus:

Continuous product and process improvements



Sustainability Commitment:

Certified low carbon production



Flexible

MOQs and Competitive Lead Times



Quality consistency



Value For Money



CONTACT INFORMATION

Head Office



Alumex PLC

Pattiwila Road, Sapugaskanda, Makola, Sri Lanka.



+94-11-2400332



www.alumexgroup.com



im@alumexgroup.com



Alumex PLC



Visit US



Elevate ESG



Download Catalogue



From timeless design to advanced finishing, our solutions go beyond shaping profileswe create possibilities.