



DESTINATION MUCHINGA 2023

"PROMOTING INVESTMENT FOR A GREEN AND HEALTHY ENVIRONMENT
THROUGH SUSTAINABLE DEVELOPMENT"

3RD - 8TH OCTOBER, 2023



Muchinga Province Investment Forum & Expo



REPUBLIC OF ZAMBIA

PROVINCIAL ADMINISTRATION

Foreword

The Office of the President, Provincial Administration in Muchinga Province will in October, 2023, host an Investment Forum and Expo. The Investment Forum and Expo will showcase the massive investment opportunities that the region is endowed with. The province will host His Excellency Mr. Hakainde Hichilema the President of the Republic of Zambia as Guest of Honor, diplomats accredited to Zambia, business houses and other high-ranking officials and VIPs.

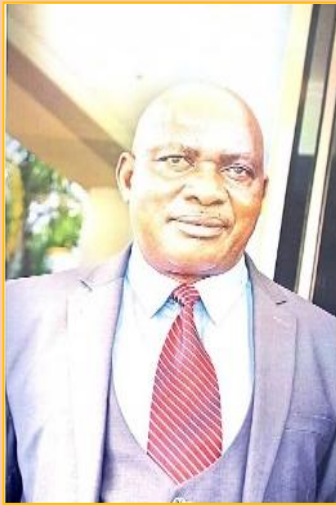


The Muchinga Province Investment Expo will not be a “business as usual” activity. It is being envisaged to result into tangible investment in targeted sectors of Tourism, Agriculture, Energy, Mining and Manufacturing (value addition) being put up in the region. The Provincial Administration, in collaboration with the private sector in the province, such as the Chamber of Commerce, has started engaging and luring potential investors to invest in the region, way before the Expo. It is the hope of the Provincial Administration that at the time of the Expo, preliminary agreements on investment deals in the province would have been concluded between the potential investors and key stakeholders such as the traditional leaders, Government and private institutions.

The official groundbreaking ceremony of the Provincial Museum is one of the sideline events planned for the Expo. The Museum to be located in Chinsali will combine a collection of information and other historical relics related to the fight against colonialism, a landmark to honour and immortalise the gallant men and women who took part in the liberation struggle and sacrificed their lives so that the country can enjoy the peace being experienced today. The Provincial Museum will also bring to reality the policy pronouncement made by His Excellency President of the Republic of Zambia during the memorial service for the late Mr. Simon Mwansa Kapwewe that was held in Chinsali in October 2021. The Head of State emphasised on the need to document and preserve the history of freedom fighters as well as identify all historical sites around the country that Government officials will be visiting during the commemoration of independence.

HENRY SIKAZWE (MP)
**HON. PROVINCIAL MINISTER
MUCHINGA PROVINCE**

Executive Summary



The Provincial Investment Profile has been developed to highlight the investment opportunities that exist in the Province with the objective of attracting domestic and foreign investment. It is intended to serve as an easy tool for the identification of opportunities in the Province. The profile has been drawn from information gathered from the eight districts of Muchinga Province with an emphasis on priority investment opportunities where comparative advantages exist.

Though, the document does not exhaust all the investment opportunities that exist in the Province, investors are therefore, urged to gather more information on available potential investment as they interact with the various

Exhibitors. There are investment opportunities across sectors ranging from agriculture, mining, tourism, manufacturing and Energy.

The Province presents investment opportunities in the production and processing of rice, sugarcane, maize, cassava, wheat fish, timber and citrus fruits, such as mangoes, also abound. Furthermore, the province equally presents investment opportunities in mineral explorations, solar and hydro power and wind energy generation.

Muchinga Province has great potential for Tourism. The Mayuke Hot Spring, Kapisha Hot Spring, Shiwa Castle, Bangweulu Wetlands, North and South Luangwa National Park and Lavushimanda National Park, all form part of the tourist attractions in the region. Apart from these, there is also the Zwangendaba Burial Site, Nyika Plateau, Nachikufu Caves, Mutinondo Wilderness, Chipoma Falls, Mumbo-Tuta Waterfalls and the source of Luangwa River in Isoka District

There is enormous demand housing in the Province, with the local authorities in the Province in respective districts taking a strategic initiative by putting aside land for housing development available to potential investors willing to partner with the local authorities to develop the housing units.

HENRY MUKUNGULE MR.
PERMANENT SECRETARY
MUCHINGA PROVINCE

Contents

1.0	Introduction	1
1.1	Muchinga Province at a Glance	1
1.2	Muchinga Province Resource Mapping	3
1.3	Geographical Location of Muchinga Province	12
2.0	Investment Opportunities in Muchinga Province.....	12
2.1	Summary of Investment opportunities being promoted in various sectors	12
2.2.1	Agricultural Sector in Muchinga Province	13
2.2.2	ZAMPALM Plantation	13
2.2.3	Sericulture Silk Cultivation	14
2.2.4	Irish Potatoes production	14
2.2.5	Arable land for Agriculture, Resettlement and Farm Block Development ...	14
2.2.6	Secured Land for Commercial Agriculture	15
2.2.7	Livestock and Fish Production in the province.....	15
2.2.8	Mbesuma cattle Breeding Centre in Chinsali District	16
2.2.9	Fisheries Development.....	16
2.2.10	Fish Farming Levels in the Province	16
3.0	Energy Sector.....	17
3.1	Global Solar Irradiation in Zambia	17
3.2	Wind Hotspots in Zambia	18
3.3	Geothermal Energy	18
2.4	Specific sites for potential energy in the province.....	19
3	Tourism, National Heritage Site and Traditional	20
3.4	National Parks and game reserve.....	20
3.5	Shiwang'andu Private Game Reserve	22
3.6	Lavushimanda National Park.....	22
3.7	Mutinondo Wilderness.....	23
4.5	The Bangweulu Wetlands	23

3.8	Chipoma Waterfalls.....	24
4.7	Historical Sites.....	24
4.7.1	Lubwa Mission.....	25
4.7.2	Shiwang'andu House.....	25
4.7.3	Lenshina Burial Place	26
4.7.4	Mwenzu Mission	26
4.7.5	Zwangedaba's Burial Site	27
4.7.6	Nachikufu Cave	27
4.7.7	Shambalakale Retirement House	28
4.7.8	Traditional Culture	28
4	Mining Sector	28
4.4	Traces of precious minerals in the province	29
4.5	Traces of coal in Mafinga District	29
4.6	Manganese Ore Lavushimanda District.....	29
4.7	Phosphate traces in Isoka District	30
4.8	Rare Earth Elements (REE).....	30
4.9	Traces of Copper in Mpika District.....	23
5	Tax Incentives Government is Promoting through Provincial Administration.....	23
6	Additional Information to the Investors	25



1.0 Introduction

Muchinga Province, comprising of eight (8) Districts, intends to hold its Investment Forum and Expo 2023 from 3rd to 8th October, 2023 in Chinsali District. By hosting the Investment Forum and Expo, the province through the use of the integrated (multi-sectoral) development approach, will take advantage of the comparative and competitive advantages of the region by showcasing the investment opportunities in sectors such as Agriculture, Tourism, Energy, Manufacturing and Mining to mention but a few.

The theme for the Investment Forum and Expo is "***Promoting Investment for a Green and Healthy Environment through Sustainable Development***". Through this theme, the province hopes to unlock its economic potential for investment through increased private sector participation in the economy, whilst promoting green and sustainable development. The province will, therefore, take advantage of the Expo to do the ground breaking ceremony for the constructing of Provincial Museum which will contain information and other collections, related to the fight against colonialism owing to the fact that the province has a bigger history as regards to the struggle for independence

1.1 Muchinga Province at a Glance

Location	Northern Part Of Zambia (the province to way to East Africa through Great North Road)
Total Surface Area	87,714.5 square kilometers
Population	918,296
Districts	Eight (8)
Climate	Humid subtropical, dry winter climate (Agro-Ecological Zone III)
Main Economic Activities	Agriculture, Tourism, Commerce and Trade
Transport Infrastructure	Rail and Road
Available Resources	Land, Forestry Mineral Resource, Wildlife and Water Bodies

District	Project title	Potential	Available investment opportunities	Location
Nakonde	Maize Value Chain (Processing Plant) Project	<ul style="list-style-type: none"> • Favorable weather conditions • Favorable trade environment (readily available market) • Favorable climatic conditions • High demand for maize products in the area • Favorable trade environment (readily available market) 	<ul style="list-style-type: none"> • Construction of bulking centers • Establishment of out grower schemes for rice • Construction of bulking center • Establishment of milling plants • Establishment of commercial maize farms 	Old Fife Area of Nakonde District
	Modern Retail Shopping Centre	<ul style="list-style-type: none"> • Availability of land for construction of modern shopping mall 	<ul style="list-style-type: none"> • Construction of modern retail shops • Construction of warehouses • Establishment of transport and logistics companies 	Nakonde Town Centre along Great North Road
	Chanka Wind Power Project	<ul style="list-style-type: none"> • Availability of mountainous land with sufficient winds on the windward slope • Conducive Government policy to promote alternative sustainable energy • Advantage of ready market due to a power purchase agreement by Government to buy from independent power producers • The proximity of the area to east Africa has potential to generate forex from export of power 	<ul style="list-style-type: none"> • Establishment of wind farms • Establishment of supporting electricity power infrastructure • Establishment of warehouses for storage of equipment 	Chanka Village in Nakonde
	Zwangendaba burial site	<ul style="list-style-type: none"> • Good road network • Vast land around the site • Popular tourist site due to historical significance in southern African region 	<ul style="list-style-type: none"> • Establishment of hospitality infrastructure 	Zwangendaba site

1.2 Muchinga Province Resource Mapping

District	Project title	Potential	Available investment opportunities	Location
Shiwang'andu	Tourism Infrastructure	<ul style="list-style-type: none"> The area is significant as Dr. David Livingstone took his bearing from this hill in 1867 Suitable terrain for Tourism Adventure and other outdoor activities such as (hiking, quad bike riding among others) 	<ul style="list-style-type: none"> Establishment of hospitality infrastructure 	<p>Shiwang'andu District</p> <p>Nachipala Bare Back Hill</p>
	Beef cattle ranch integrated with small livestock (Goats and Sheep) rearing	<ul style="list-style-type: none"> Favourable climatic conditions Availability of land, water and natural pasture Availability of ready market for beef products Fewer livestock diseases Easy access to road networks as the district is centrally located 	<ul style="list-style-type: none"> Establishment of a Beef processing industry Construction of Artificial insemination Centre to improve breeds 	Shiwang'andu District
	Wheat production	<ul style="list-style-type: none"> Readily available market Favourable climate weather conditions Vast portions of fertile land and plenty water Availability local labour Easy accessibility 	<ul style="list-style-type: none"> Establishment of rice and wheat processing plant Construction of bulking centres 	<p>Shiwang'andu District</p> <p>Nanshinga flood plains</p>
	Forestry Plantation	<ul style="list-style-type: none"> Readily available market Favourable climate weather conditions Vast portions of fertile land and plenty of water Availability of local labour Government will to increase production Easy accessibility 	<ul style="list-style-type: none"> Wood Processing 	Shiwang'andu District
	Hydro power generation	<ul style="list-style-type: none"> Hydro power generation (4.8mw) Irrigation 	<ul style="list-style-type: none"> Irrigation potential for agriculture and hydropower generation 	<p>Shiwang'andu District</p> <p>Namundela Falls</p>
	Hydro power generation	<ul style="list-style-type: none"> Hydro power generation Irrigation 	<ul style="list-style-type: none"> Irrigation potential for agriculture and hydropower generation 	<p>Shiwang'andu District</p> <p>Chusa Falls</p>

District	Project title	Potential	Available investment opportunities	Location
Isoka	Mealie-Meal Production	<ul style="list-style-type: none"> • Availability of suitable land • Abundance of raw materials Availability of out-grower schemes • Availability of skilled human resource 	<ul style="list-style-type: none"> • Establishment of a Mealie-meal/Stock feed processing plants • Construction of bulking centres 	Katyetye Chiefdom- Chinyonga Ward
	Meat production	<ul style="list-style-type: none"> • Favourable climatic conditions • Availability of land, water and natural pasture • Availability of ready market for beef products • Fewer livestock diseases • Easy access to road networks 	<ul style="list-style-type: none"> • Establishment of a meat processing plant 	Katyetye Chiefdom- Chinyonga Ward
	Rice Production	<ul style="list-style-type: none"> • The district has potential to produce 40,600 metric tons of rice • Availability of land for the plants • Availability of out-grower schemes 	<ul style="list-style-type: none"> • Establishment of rice processing plant • Construction of warehousing facilities • Commercial rice production through an out grower scheme and contact farming 	Isoka Industrial area
	Tourism Infrastructure	<ul style="list-style-type: none"> • Availability of land • Scenery environment 	<ul style="list-style-type: none"> • Establishment of tourism infrastructure 	Nansala falls
	Rice plantations	<ul style="list-style-type: none"> • Readily available market • Favourable climate weather conditions • Vast portions of land • Availability of local Labour • Fertile lands and plenty of water • Easy accessibility 	<ul style="list-style-type: none"> • Establishing of rice processing plants • Establishment of rice plantation Establishment of bulking centres 	Kantenshya Ward (Lwanga plains)
	Sugar plantation	<ul style="list-style-type: none"> • Readily available market • Favourable climate weather conditions • Vast portions of land • Availability local labour • Fertile lands and plenty of water • Easy accessibility 	<ul style="list-style-type: none"> • Establishment of sugar plantation • Establishment of sugar processing plant Establishment of bulking centres 	Kantenshya Ward (Lwanga plains)

District	Project title	Potential	Available investment opportunities	Location
Chinsali	Rice Production	<ul style="list-style-type: none"> • Easy access to markets • Abundance of arable land • Favourable climate • Abundant rainfall (above 1000mm per year) 	<ul style="list-style-type: none"> • Establishment of a rice plantation • Establishment of a rice processing plant • Establishment of bulking centres 	Nashinga Flood Plains area
	Fish farming	<ul style="list-style-type: none"> • Easy access to markets • Abundance of arable land • Favourable climate for fish farming 	<ul style="list-style-type: none"> • Establishment of modern fingerling breeding facility • Establishment of feed manufacturing plant • Establishment of Cold rooms • Establishment of fish cages manufacturing Plant 	Nashinga Flood Plains area
	Sugar plantation	<ul style="list-style-type: none"> • Readily available market • Favourable climate weather conditions • Vast portions of land • Availability of local labour • Fertile lands and plenty of water • Easy accessibility 	<ul style="list-style-type: none"> • Establishment of sugar plantation • Establishment of sugar processing plant • Establishment of bulking centres 	Nashinga Flood Plains area
	Rice plantations	<ul style="list-style-type: none"> • Readily available market • Favourable climate weather conditions • Vast portions of land • Availability of local labour • Fertile lands and plenty of water • Easy accessibility 	<ul style="list-style-type: none"> • Establishing of rice processing plants • Establishment of rice plantation • Establishment of bulking centres 	Nashinga Flood Plains Area

Chinsali	Timber Plantation	<ul style="list-style-type: none"> • Readily available market • Favourable climate weather conditions • Vast portions of land • Fertile soils and plenty of water • Connectivity to East Africa through Great North Road. 	<ul style="list-style-type: none"> • Establishment of a timber plantation • Establishment of saw mills • Establishment of a bulking centre • 	Nanshinga flood plains
	Lubwa Mission	<ul style="list-style-type: none"> • The site has historical political significance as it was the birth place of the first Republican President • In addition, the site bares the grave sites of the mother to the first President of the Republic of Zambia, Paul Mushindo among other prominent people. 	<ul style="list-style-type: none"> • Possibility of partnering with management to maintain and operate the tourist site. 	Lubwa Mission
	Leshina Burial Place	<ul style="list-style-type: none"> • The site is of historical significance as it is the resting place of the popular leader of the Lumpa Church 	<ul style="list-style-type: none"> • Production of a documentary on the history of Leshina and the Lumpa Church 	Kasomo Village
	Chipoma Falls	<ul style="list-style-type: none"> • National Heritage site • Availability of land 	<ul style="list-style-type: none"> • Establishment of tourism camping facilities 	Chipoma Falls
	Chipoma Falls	<ul style="list-style-type: none"> • Hydro-power generation • Availability of land and water • The demand for alternative source of energy is high due to government policy for sustainable energy 	<ul style="list-style-type: none"> • Construction of Hydro-power Station 	Chipoma falls

District	Project title	Potential	Available investment opportunities	Location
Mafinga	Exotic tree plantation	<ul style="list-style-type: none"> • Availability of land • Good climatic conditions • Availability of local and international markets i.e. Tanzania and Malawi 	<ul style="list-style-type: none"> • Establishment of timber processing plant 	Mwenechifungwe Chiefdom, Thendele ward, Mafinga
	Beans Plant project	<ul style="list-style-type: none"> • Availability of land • Good climatic conditions • District is able to produce up to 4000 metric tons of beans that is mainly sold locally • Good number of competent small scale farmers who can be involved in out grower farming • Availability of local and International Markets i.e. Tanzania and Malawi 	<ul style="list-style-type: none"> • Establishment of beans polishing and packaging facility • Construction of bulking centres 	Mwenechifungwe Chiefdom, Thendele ward, Mafinga
	Maize Production	<ul style="list-style-type: none"> • Availability of land • Good rainfall/weather pattern that favours high maize Production • Readily available expertise within the district • Availability of local and International Markets i.e. Tanzania, DR Congo and Malawi • Availability of Power 	<ul style="list-style-type: none"> • Construction of a maize processing plant • Construction of bulking centres 	Thendele ward, Mafinga
	Nyika plateau	<ul style="list-style-type: none"> • Availability of land • Good climatic conditions • Low animal disease prevalence 	<ul style="list-style-type: none"> • Investment in Livestock production • Timber production 	Ntonga Ward
	Cable transport (Car)	<ul style="list-style-type: none"> • Landscape suitable for site seeing and hiking 	<ul style="list-style-type: none"> • Establishment of tourism amenities 	Mafinga Hills Source of Luangwa River
	Coal mining	<ul style="list-style-type: none"> • Presence of mineral deposits 	<ul style="list-style-type: none"> • Establishment of a Coal mine 	Mukutu Ward
	Manganese mining	<ul style="list-style-type: none"> • Presence of mineral deposits 	<ul style="list-style-type: none"> • Establishment of a Manganese mine 	Mukutu Ward
	Granite mining	<ul style="list-style-type: none"> • Presence of mineral deposits 	<ul style="list-style-type: none"> • Establishment of a Granite mine 	Mukutu Ward

District	Project title	Potential	Available investment opportunities	Location
Mpika	Production of 40MW Solar Energy	<ul style="list-style-type: none"> • Availability of 330kva line and substation in the district • Availability of Market(s) both locally and internationally • High demand for power in the District • Availability of Land 	<ul style="list-style-type: none"> • Establishment of 40MW Solar Energy Plant 	Makungwa Ward, Manyowe Farms
	Production of 20MW Wind Energy	<ul style="list-style-type: none"> • Availability of mountainous land with sufficient winds on the windward slope • Conducive Government policy to promote alternative sustainable energy • Advantage of ready market due to a power purchase agreement by Government to buy from independent power producers • The proximity of the area to East Africa has potential to generate forex from export of power 	<ul style="list-style-type: none"> • Establishment of wind farms • Establishment of supporting electricity power infrastructure • Establishment of warehouses for storage of equipment 	Chief Chikwanda's Chiefdom
	Nachikufu Caves	<ul style="list-style-type: none"> • The land is under national heritage • Availability of onsite tourism • Easy access 	<ul style="list-style-type: none"> • Construction of a hotel and other tourism facilities 	Nachikufu caves off T2 Road. Mukonteka Area
	Industrial Hub	<ul style="list-style-type: none"> • Availability of land • Abundant Transport Infrastructure • Reliable energy infrastructure • Strategically located with good road network leading to ready market both local and international 	<ul style="list-style-type: none"> • Construction of an Industrial Hub 	Mpika

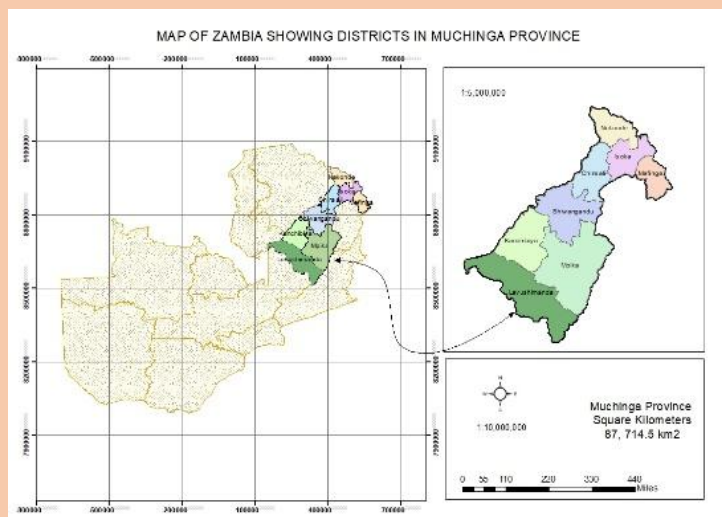
Mpika	Shopping Mall & hotels	<ul style="list-style-type: none"> • Availability of Land • Centrally located to viable markets in the region 	<ul style="list-style-type: none"> • Construction of modern commercial infrastructure 	Mpika
	Sugarcane Plantation & processing plant	<ul style="list-style-type: none"> • Availability of land • Good climatic conditions and fertile soil 	<ul style="list-style-type: none"> • Construction of sugar processing plant • Establishment of sugar plantation 	Chief Chikwanda
	North Luangwa National Park	<ul style="list-style-type: none"> • Abundant wild life • Favourable climate 	<ul style="list-style-type: none"> • Set-up camping site • Set-up hunting Safari • Promote Safari / Wildlife photography • Leather tanning 	North Luangwa
	South Luangwa National Park	<ul style="list-style-type: none"> • Abundant wild life • Favourable climate 	<ul style="list-style-type: none"> • Set-up camping site • Set-up hunting Safari • Leather tanning 	South Luangwa
	Manganese Mining	<ul style="list-style-type: none"> • Presences of manganese deposits 	<ul style="list-style-type: none"> • Establishment of a manganese mine and battery manufacturing plant 	Mpika
	Copper Mining	<ul style="list-style-type: none"> • Presences of copper deposits 	<ul style="list-style-type: none"> • Establishment of a Copper mine and battery manufacturing 	Mpika
	Granite Mining	<ul style="list-style-type: none"> • Presences of granite deposits 	<ul style="list-style-type: none"> • Establishment of a Granite mine and tiles manufacturing 	Mpika

District	Project title	Potential	Available investment opportunities	Location
Kanchibiya	Fish Farming Cages	<ul style="list-style-type: none"> • Easy access to markets • Abundance of arable land • Favourable climatic conditions for fish farming 	<ul style="list-style-type: none"> • Establishment of modern fingerling breeding facility • Establishment of feed manufacturing plant • Establishment of cold rooms. • Establishment of fish cages manufacturing plant 	Munkunta Village
	Palm Oil Processing	<ul style="list-style-type: none"> • Availability of land • Good rainfall/weather pattern that favours high maize production 	<ul style="list-style-type: none"> • Construction of an oil processing plant • Construction of bulking centres 	Kasomo Premier CBD
	Maize Processing Plant	<ul style="list-style-type: none"> • Availability of land • Good rainfall/weather pattern that favours high maize production • Availability of local and international markets • Availability of power 	<ul style="list-style-type: none"> • Construction of a maize processing plant • Construction of bulking centres 	Kasomo Premier CBD
	Production of Vegetable Oil (sunflower and soya Beans Processing)	<ul style="list-style-type: none"> • Abundance of arable land • Favourable climate • Abundant rainfall (above 1000mm per year) 	<ul style="list-style-type: none"> • Establishment of a vegetable oil processing plant • Establishment of a vegetable oil plantation • Establishment of bulking centres 	Kaleka
	Rice Production & Processing	<ul style="list-style-type: none"> • Easy access to markets • Abundance of arable land • Favourable climate • Abundant rainfall (above 1000mm per year) 	<ul style="list-style-type: none"> • Establishment of a rice plantation • Establishment of a rice processing plant • Establishment of bulking centres 	Lokomwila
	Sugarcane Plantation	<ul style="list-style-type: none"> • Easy access to markets • Abundance of arable land • Favourable climate • Abundant rainfall (above 1000mm per year) 	<ul style="list-style-type: none"> • Establishment of a sugar plantation • Establishment of a sugar processing plant • Establishment of bulking centres 	Munikashi

District	Project title	Potential	Available investment opportunities	Location
Lavushimanda	Manganese Mining	<ul style="list-style-type: none"> • Presence of mineral deposits 	<ul style="list-style-type: none"> • Establishment of a Manganese mine 	Chiundaponde & Mpumba
	Tourism Bush Camps & Lodges	<ul style="list-style-type: none"> • Suitable terrain for tourism adventure and other outdoor activities 	<ul style="list-style-type: none"> • Establishment of Bush camps of Lodges 	Bangweulu Game Management Area
	Irish Potato Production	<ul style="list-style-type: none"> • Easy access to markets • Abundance of arable land • Favourable climate • Abundant rainfall (above 1000mm per year) 	<ul style="list-style-type: none"> • Establishment of Irish Potato processing plant 	Mupamanzi & Lukulu area
	Mtinanondo Hydro Power Project (60MW)	<ul style="list-style-type: none"> • Hydro-power generation • Availability of land and water • The demand for alternative source of energy is high due to government policy for sustainable energy 	<ul style="list-style-type: none"> • Construction of Hydro-power Station 	Mutinanondo falls/ Mutinanondo River
	Avocado Production	<ul style="list-style-type: none"> • Easy access to markets • Abundance of Arable land • Favourable climate • Abundant rainfall (above 1000mm per year) 	<ul style="list-style-type: none"> • Construction of bulking centre • Establishment of an avocado processing plant 	Mupamanzi Area
	Mupamanzi Hydro Electricity Project	<ul style="list-style-type: none"> • Hydro-power generation • Availability of land and water • The demand for alternative source of energy is high due to government policy for sustainable energy 	<ul style="list-style-type: none"> • Construction of hydro-power station 	Mupamanzi River
	Lavushimanda National Park	<ul style="list-style-type: none"> • Availability of land 	<ul style="list-style-type: none"> • Establishment of bush camps and lodges 	Bangweulu Wetlands
	Mutinondo Wilderness	<ul style="list-style-type: none"> • Availability of land 	<ul style="list-style-type: none"> • Establishment of Bush camps and lodges 	Mutinodo
	Cooking Oil Processing Plant	<ul style="list-style-type: none"> • Availability of land • Easy access to markets 	<ul style="list-style-type: none"> • Establishment of a cooking oil processing plant 	Light Industrial Area, Kalonje

1.3 Geographical Location of Muchinga Province

Muchinga Province is one of Zambia's 10 Provinces, located in the northeast part of the country, covering a total area is 87,714.5 Km² of which 60% is arable land and 40% is land covered by mountains, wetlands and game management areas. The province is fourth largest in terms of geographical size in the country., with a population of of 918,



296 which is the lowest among the 10 provinces (Zamstat, 2022 Census Report). The population growth rate is at 3.1 percent per annum and a population density of 8.1 people /km², making it the third lowest province in Zambia.

The Province falls in two ecological regions namely region III and region II with over 75 percent falling in region III of Zambia's agro-ecological zones with average temperature between 10° Celsius and 28° Celsius, and annual

rainfalls of 1000mm to 1400mm. 25 percent of the province falls in region II of Zambia's agro ecological zones having climatic condition with average annual rainfall of less than 1000mm. The province consists of eight (8) districts, namely; Chinsali, Isoka, Mpika, Mafinga, Nakonde, Shiwang'andu, Lavushimanda and Kanchibiya. Chinsali District is the Provincial Capital of the province

2.0 Investment Opportunities in Muchinga Province

2.1 Summary of Investment opportunities being promoted in various sectors

The province has investment opportunities in Agriculture, Energy, Tourism, Mining and Manufacturing. The table below gives a summary of the available opportunities.

Priority Sector	Sector Information	Investment Opportunities
Agriculture	<ul style="list-style-type: none"> The Province has good climatic conditions and sufficient rainfall and water bodies for irrigation. The Province has good soils that support crop production 	<ul style="list-style-type: none"> Establishment of out grower schemes Establishment of sugar, rice plantations Establishment of agro processing plants in sugar, rice citrus fruit, palm oil
Energy	<ul style="list-style-type: none"> The Province has potential in wind, solar and hydro power generation 	<ul style="list-style-type: none"> Investment in hydropower generation Investment in solar energy generation
Tourism	The main tourist attractions are:	<ul style="list-style-type: none"> Investment in Accommodation and

	<ul style="list-style-type: none"> • Bangweulu Wetlands • North and South Luangwa National Park • Lavushimanda National Park • Zwangendaba Burial Site • Nyika Plateau • Nachikufu Caves • Mutinondo Wilderness • Chipoma Falls • Mumbo Tuta waterfalls and the source of Luangwa river to mention, among others 	<ul style="list-style-type: none"> • conference facilities (Lodges and Hotels) • Cable transport
Mining	<ul style="list-style-type: none"> • The Province has potential for mineral exploration for Copper, Manganese, Diamonds, Granite 	<ul style="list-style-type: none"> • Explorations for the existence of Manganese, Granite, Diamonds, rare earth, phosphate and Copper ore

2.2.1 Agricultural Sector in Muchinga Province

The province’s agriculture sector is predominantly small scale and mainly carried out for subsistence purposes. Since the Province falls under ecological region II and III, it has good climatic conditions hence having sufficient rainfall. The cultivated crops include maize—which is grown as a staple crop in the country, rice, cassava, millet, sorghum, beans, groundnuts, sweet potatoes, pumpkins etc.

Commercial farming is not well established but efforts are being made to accelerate the growth of the sector. Some of the efforts by government include opening up of areas for farming blocks, these include Manshya, Mupamadzi and Kanchibiya.

2.2.2 ZAMPALM Plantation

Zampalm is the first ever palm plantation in Zambia. The plantation boast of 3,300 hectares of palm plants, the harvest produces crude palm oil that is the basic ingredient in most vegetable oils on the markets in Zambia. Currently, harvest of palm oil is done from 1,200 hectares of palm plants, the crude palm oil that is harvested is sold locally.



2.2.3 Sericulture Silk Cultivation



Chikwanda chiefdom trust has partnered with Wonderful Group of Companies to set up silk cultivation and production farm on a 5,000 hectares of land in Mutamba area of Chief Chikwanda. The project is expected to employ over 2,000 workers. The company has also diversified into other crop so that the land without mulberry plants is not left idle.

Picture: Worms used in the silk cultivation in Mpika Sericulture

2.2.4 Irish Potatoes production

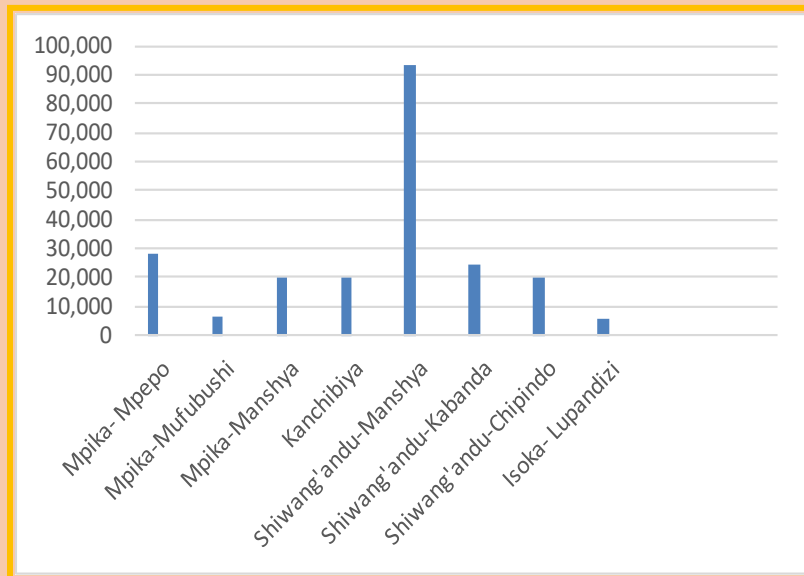
Lavushimanda district has great potential to expand the production of Irish potatoes because of favourable weather condition and suitable soils (sandy loam). The crop is grown throughout the year both under irrigation and rain fed on a small scale. Currently the district produces more than 700 metric tons of Irish Potatoes each year and more than 200 hectares' of land is dedicated to the production of the tubers.



2.2.5 Arable land for Agriculture, Resettlement and Farm Block Development

In order to open up the province for agriculture and other development, the province has 256,294 hectares of land in a number of Resettlement Schemes in all the districts as well as one big farm block, which is shared by Mpika and Shiwang'andu districts. The

province will continue securing pieces of land for resettlement development including provision of basic services in these resettlement areas. The table on the right illustrates secured hectares of land in the various districts of the Province.



Source: Ministry of Agriculture & Department of Land Resettlement



2.2.6 Secured Land for Commercial Agriculture

One major project, which is being promoted in the province, is the establishment of the 113,000 hectares Manshya Farm Block. Thus far, farm block mapping and social economic survey has been done.

2.2.7 Livestock and Fish Production in the province

The livestock sub-sector in the province has great potential as the province boasts of good rainfall pattern that support the growth of animal pasture and availability of arable land. Currently, there are 82,285 cattle, 29,554 pigs, 92,179 goats, 15,791 sheep and 386,202 poultry. The detailed distribution by district and type of livestock is reflected in the table below (*Source: Ministry of Livestock and Fisheries*):



Beef cattle are found in all the districts although the leading one is Mafinga followed by Nakonde, Mpika and Isoka District respectively. Muchinga Province has good climate which is conducive and provides great potential for ranching and dairying.

2.2.8 Mbesuma cattle Breeding Centre in Chinsali District

The province offers immense opportunity to grow the livestock sub-sector in the region as it houses Mbesuma cattle breeding centre located in Chinsali District and Luchembe

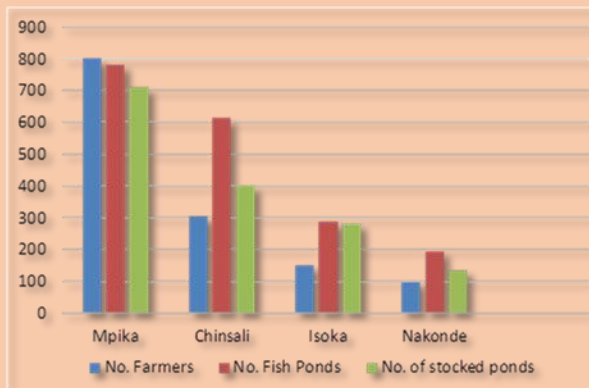


2.2.9 Fisheries Development

The province has 1,939 fishponds of which 1,499 are stocked. The fisheries subsector equally has great potential to develop. There are abundant water sources for developing both capture and aquaculture fisheries in the province.

2.2.10 Fish Farming Levels in the Province

The table below shows the number of fish ponds in the province against what is stocked with fingerling. The sector has a lot of investment potential in production of fish feed, cold storage facilities, fish cage to mention but a few. The table on below shows number of fish farmers, fish ponds and ponds that are stocked.



Source: Ministry of Livestock and Fisheries

3.0 Energy Sector

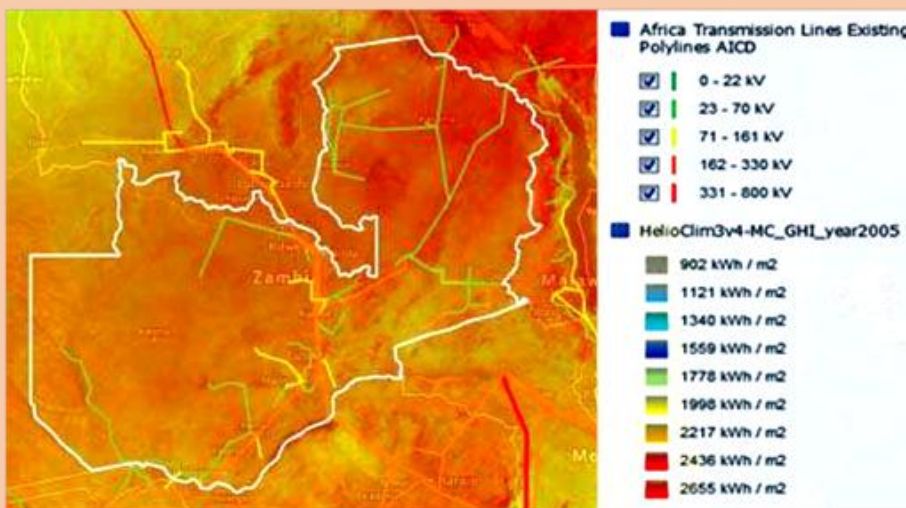


The province has great potential of both renewable and non-renewable energy sources. The 330 Kilo watts Pensulo-Mpika-Kasama Hydropower station which can support whatever investment passes through the province apart from the Mini hydropower station (1 Megawatt) at Shiwang'andu district of the province.

“1MW Shiwang'andu Mini Hydro Power Station housing 02 units rated at 500KW each. The power station was commissioned on 5th December 2012. This little power station draws it's water from Manshya river located approximately 43 Km from Shiwang'andu District along Shiwang'andu road in Muchinga Province. The power station services about 920 customers including Tazama (Chinsali) Oil pipe line as well as Shiwa Milling” (ZESCO, 2021)

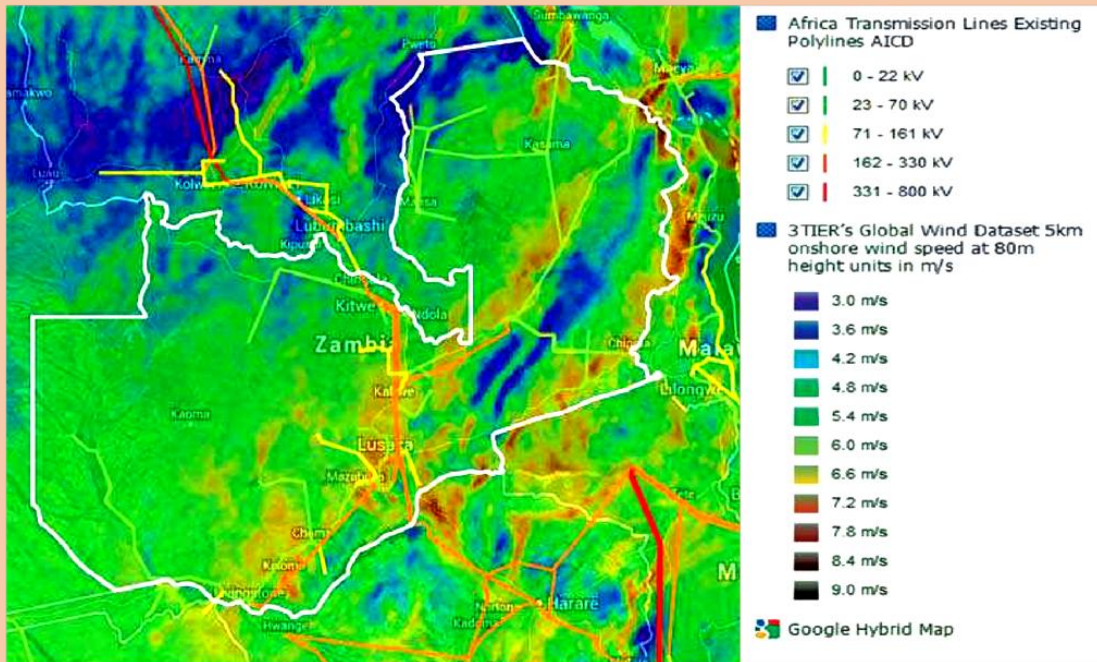
3.1 Global Solar Irradiation in Zambia

A preliminary solar energy potential assessment for Zambia was undertaken using Geographic Information System data by IRENA. In the figure below, Red regions have the highest solar irradiance values up to 2,750 kWh/m². Zambia's northern areas which include parts of Luapula, Northern and Muchinga provinces recorded the highest solar irradiation of 2,300 kWh/m²/year, Sigh et al (2013).



Source: IRENA Global Atlas

3.2 Wind Hotspots in Zambia



Source: IRENA Global Atlas

According to Singh (2013), encouraging wind hotspots at a higher altitude were however, identified from a 2012 SADC study, the Renewable Energy Strategy and Action Plan, around Chongwe area east of Lusaka (Location: 28° 47' 40" East, 15° 30' 45" South), and along the Muchinga escarpment centred on Chipembele (Location: 31° 28' 57" East, 12° 1' 53" South).

3.3 Geothermal Energy

Zambia has more than 80 hot springs (Sigh et al 2013). The Zambian hot springs associated with zones of major deep seated fault and fracture systems along which water of mainly meteoric origin circulate to great depths and is heated through normal geothermal gradients. Muchinga province has at least two potential sites at Kapishya Hot Springs in Shiwang'andu and Mayuke in Chinsali districts. These however would need feasibility studies to establish their suitability for geothermal power generation.



*Kapishya
Hot Spring*

2.4 Specific sites for potential energy in the province

No.	Project title	Capacity	Site	District	Plant type	Developer	Status
1	Mutinondo Hydroelectric Power Project	60	Mutinondo Falls, Mutinondo River	Mpika	Hydro	Powermin	Feasibility Study
2	Luchenene Hydroelectric Power Project	40	Luchenene Falls, Luchenene River	Mpika	Hydro	Powermin	Feasibility Study
3	Mupamadzi Hydroelectric Power Project	16	Mupumadzi River	Mpika	Hydro	Finesse Energy Limited	Feasibility Study
4	Kapamba Falls Hydroelectric Power Project	12	Munyamadzi River,	Mpika	Hydro	Atlantic Commodities Limited	PPA Negotiation
5	Mupamadzi Hydroelectric Power Project	-	Mupamadzi River, Mpika	Mpika	Hydro	Rein Hydro Zambia Limited	Pre-feasibility study
6	Manshya Hydroelectric Project	-	Manshya Rapids, Manshya River	Shiwang'andu	Hydro	Wind Sun Energy Limited	Pre-feasibility study
7	Namundela Falls Hydroelectric Power Project	4.8	Namundela Falls, Manshya River	Shiwang'andu	Hydro	ZESCO Ltd.	Pre-feasibility study
8	Kanyanga Hydroelectric Power Project	3	Lukulu River, Mpika	Mpika	Hydro	ZESCO Ltd.	Pre-feasibility study
9	Mpika I Wind Power Project	100	Mpika I	Mpika	Wind	Globeleq	Feasibility Study
10	Chanka Wind Power Project	-	Chanka, Nakonde	Nakonde	Wind	Globeleq	Pre-feasibility study
11	Mpika Wind Power Project	-	Mpika, Muchinga	Mpika	Wind	Windlab East Africa	Pre-feasibility study
12	Chongo Geothermal Power Project	-	Chongo Hotsprings, Mpika	Mpika	Geothermal	ZESCO Limited	Pre-feasibility Study
13	Mudzi Umodzi Shiwag'andu Solar PV Power Project	30	Shiwang'andu	Shiwang'andu	Solar	Mudzi Umodzi Development	Feasibility Study
14	Mudzi Umodzi Kanchibiya Solar PV Power Project	150	Kanchibiya, Muchinga	Kanchibiya	Solar	Mudzi Umodzi Development	Feasibility Study
15	Great North Power Solar PV Power Project	40	Mpika, Muchinga	Mpika	Solar	Great North Power Company	Feasibility Study

Source: Ministry of Energy

3 Tourism, National Heritage Site and Traditional

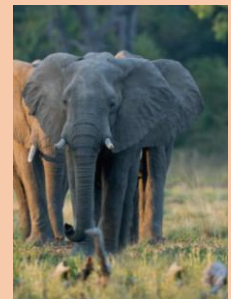
Muchinga province has a lot of tourist attractions in form of wildlife, natural and archeological sites as well as historic buildings.



Source: Ministry of Tourism and Culture

3.4 National Parks and game reserve

The province has three national parks namely Lavushimanda, North Luangwa and South Luangwa. These national parks have over 60 different animal species and over 400 different bird species in South Luangwa National Park. Prominent animals include the elephants, leopards, giraffes and lions.



North and South Luangwa National Parks showing hippos, elephants, leopard, rhino and black lechwe below

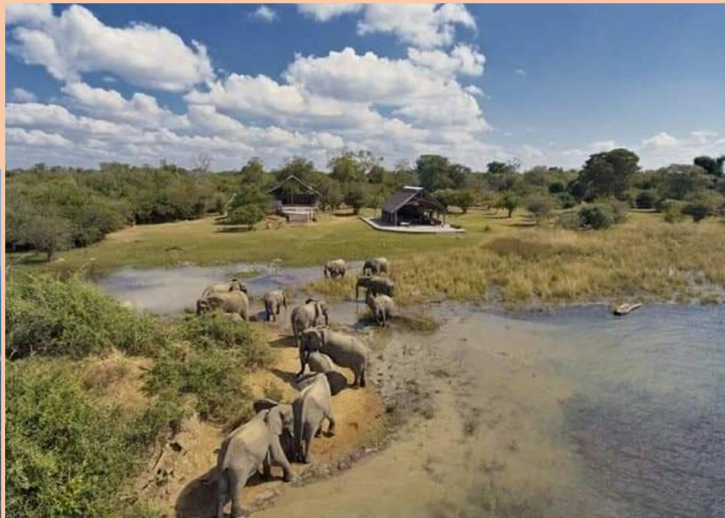


3.5 Shiwang'andu Private Game Reserve

Shiwang'andu District also home to a world class **private game reserve** which is home to over 30 exotic species of animals and 200 species of birds. The tourism facility has a large lake called Shiwang'andu, and serviced by a private airstrip making it easy to be reached via charter flights from Mfuwe, Ndola and Lusaka.

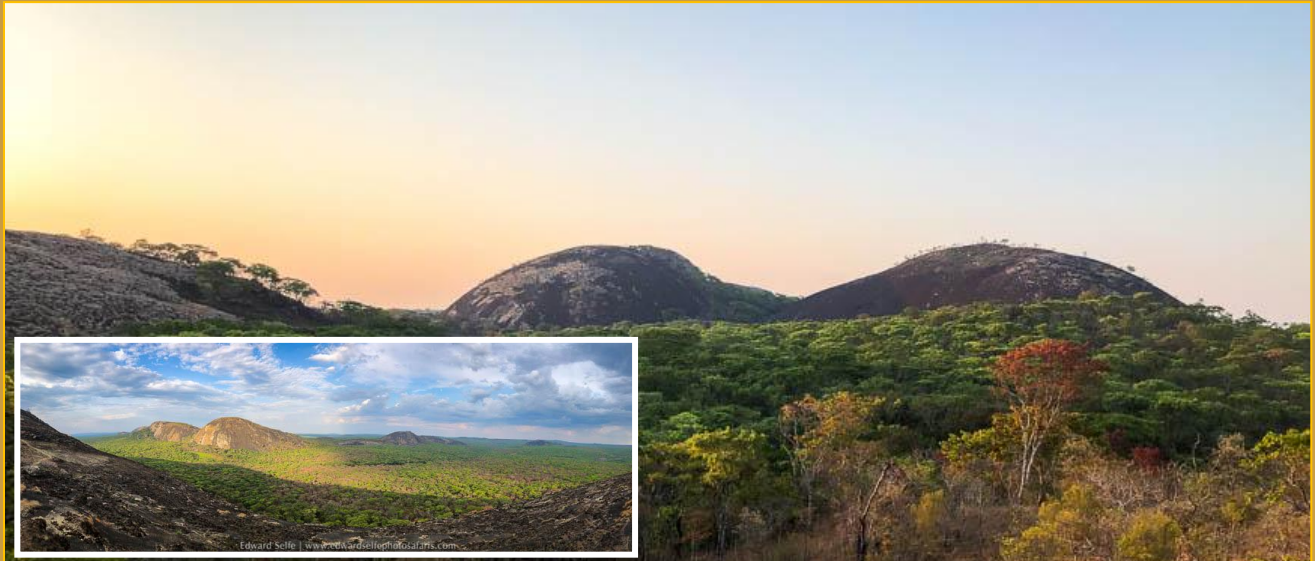
3.6 Lavushimanda National Park

Declared a National Park in 1972, Lavushimanda is potentially interesting for its hilly and very pleasant landscape. The park is currently being rehabilitated by the Kasanka Trust. Lavushimanda covers 1,500km² including the Lavushimanda Hills, making it among the largest parks in Zambia and a sanctuary to different bird and animal life.



3.7 Mutinondo Wilderness

This is one of the most stunning places in Muchinga Province. Mutinondo is a beautiful 10,000-hectare wilderness littered with whaleback hills; huge sweeping hulks of stone in varying shades of black, purple, green and brown. The landscape here feels unspoiled and ancient. Mutinondo is an important birding destination and there are about 320 bird species including plenty of rare specimens that are difficult to find outside the country. Notable are the Ross's turaco, Ancheta's sunbird and the bar-winged weaver.



Beautiful scenery of Mutinondo Wilderness in Muchinga Province (Photo Credit: Edward Selfe)

4.5 The Bangweulu Wetlands

The Bangweulu wetland is a place of high biodiversity endemism and thus renowned for being a haven for thousands of avian and ungulate species. What is spectacular about this wetland is that it is home to one of the rarest and elusive birds in Africa, the Shoebill stork, *Balaeniceps rex*. This "living fossil" migrates between Muchinga, Luapula and Northern Provinces depending on the time of the year.

Waterway in the Bangweulu Wetlands. Insert is the Shoebill stork



3.8 Chipoma Waterfalls

The province has a number of small waterfalls which include Chipoma falls is located in Chinsali district, Namundela Falls, Nansala falls in Isoka district, Kapishya Hot Springs mayuke hot spring to mention a few.

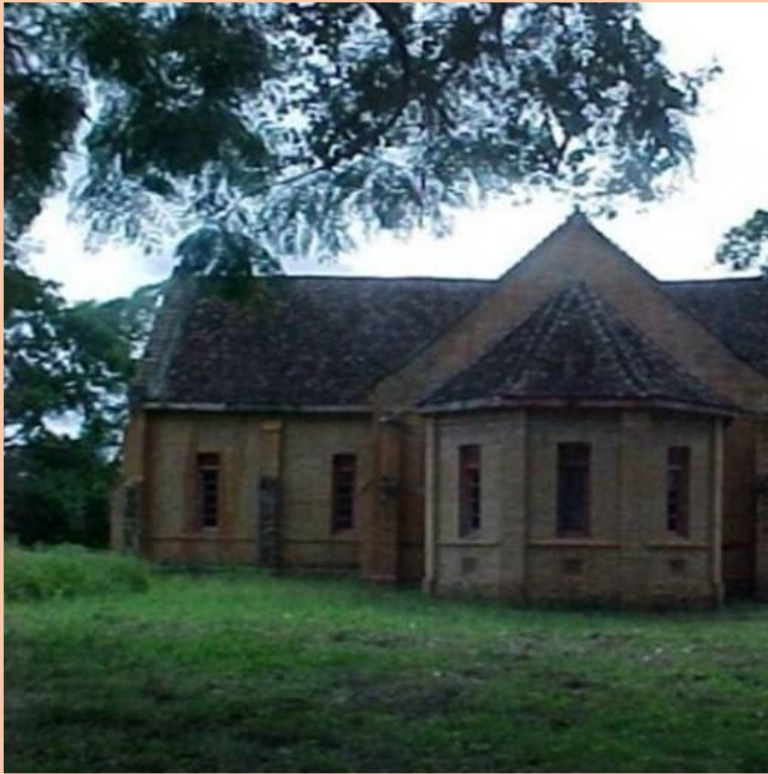


Chipoma River that develops into a burst waterfall on its course

4.7 Historical Sites

Muchinga province possesses numerous historic outposts, buildings and ruins. This can be attributed to the fact that, largely the province was 'home' to many colonial mineral prospectors (BSA Co.) political administrators, empire builders and messengers of Christianity, the missionaries, especially in the last half of the 19th century. Most profound and uniquely built historic structures are the mission settlements and churches, most of which are operational today. Lubwa Mission the birth place of first Republican president

4.7.1 Lubwa Mission



4.7.2 Shiwang'andu House



The house was built in the early 1900s, is well worth a visit. Also on the estate is Kapishya Hot Springs, an exquisite natural hot spring surrounded by lush tropical vegetation and tall raffia palms. The nearby Lake Shiwa was the sight that drew Sir Stewart Gore Brown to choose **this spot** for his home and his grandchildren now run the estate and the farm and have also established a game ranch.

89 roomed historical Shiwa house built in 1932

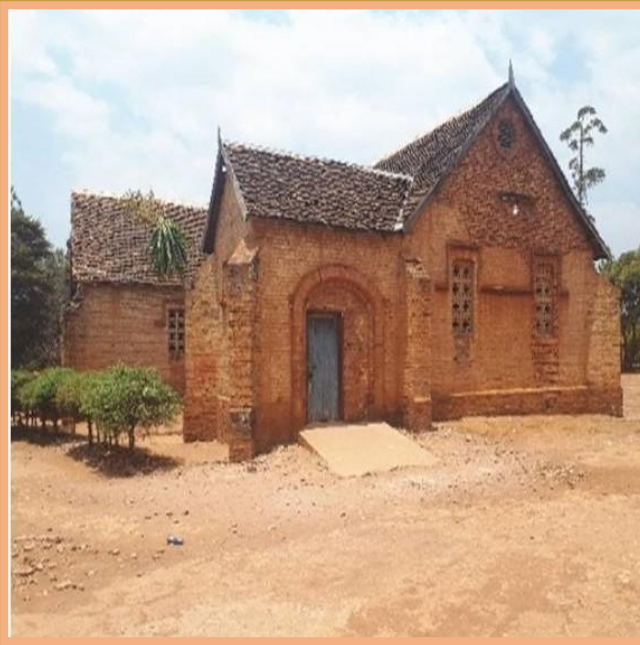
4.7.3 Lenshina Burial Place

This is a very significant burial site where Alice Lenshina was put to rest within a concrete structure. Lenshina was an independence struggle hero who led the masses through her church. Seen as a threat to the new government, the church was banned. This was received with massive resistance, resulting in bloodshed among church members whose mass grave are still tendered by surviving member, now resident in a village near Chinsali Boma

**Lenshina Alice Mulenga burial site
Kasomo village, Chinsali District**



4.7.4 Mwenzo Mission

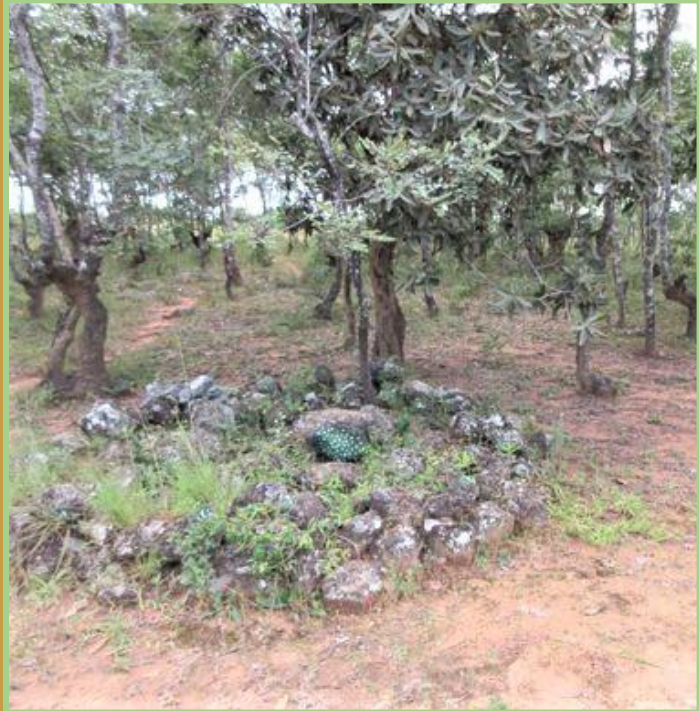


Mwenzo Mission station is located in Nakonde District and is the pioneer mission for the United Church of Zambia in Muchinga Province. The station was established in 1898 by Rev. James Alexander Chisholm of the Free Church of Scotland (FCS). The Mission is at the confluence of Nakonde and Kalulu rivers. At Mwenzo is also the first post office building in Zambia set up in 1900, church -1914, Doctor's house built in 1909 and other historical structure. This site is rich with history and architectural beauty.

*The historical building
at Mwenzo stations*

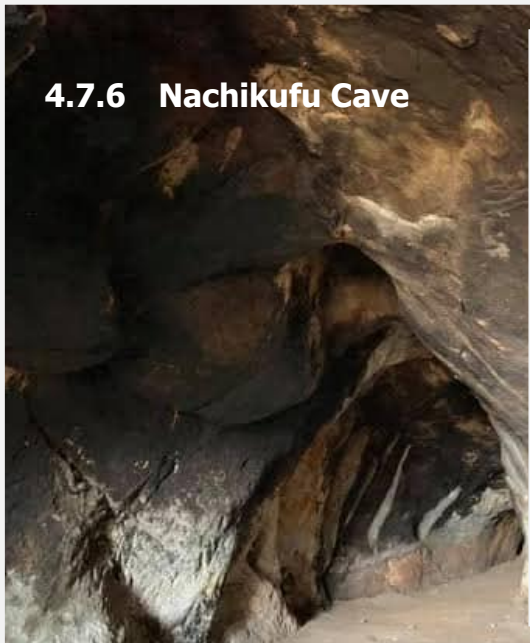
4.7.5 Zwangedaba's Burial Site

The history of Central Africa was to an extent affected by that of South Africa, especially during the reign of Shaka the Zulu in the 19th Century. The ravaging wars of Shaka, commonly referred to as Mfecane caused mass migration of weaker tribes and communities in search of peace. Among the crossed into Zambia at Zumbo and went into fipaland (Tanzania). However, due to fierce wars he returned with his people into Zambia again and died in 1848. He was according to tradition buried in Nakonde District on the Nakonde-Mbala Road about 1 KM south of Nachipeta School.



Royal grave for Ngoni King Zwangendaba

4.7.6 Nachikufu Cave

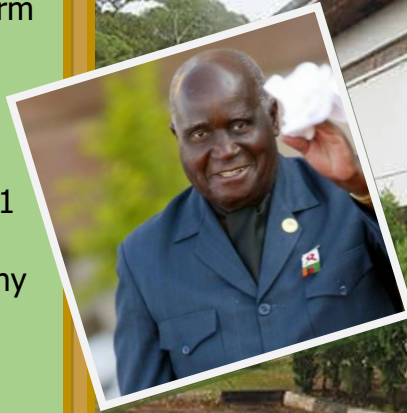


Nachikufu cave is a pre-historic archaeological site located about 80 KM from Mpika district toward Serenje and less than half a kilometre to the west, off the Great North Road. It is an area of 2,590 square kilometers having, as its centre, the northwestern end of the ridge of the Nachikufu Hills in Mpika district. The site was used by the Bisa and the Lala during the Bemba and Ngoni raid in pre-colonial era as a hide out. It also consists of valuable archaeological and scientific information which dates to about 15,000 years ago.

The rock shelter and cave comprises numerous naturalistic and schematic rock art paintings such as elephants, antelopes and elaborate grid like/rectangular motifs. Nachikufu cave undoubtedly offers tourist enjoyment and experience of historic times. The site also has a site museum comprising several Stone Age artifacts.

4.7.7 Shambalakale Retirement House

Nestled in a lush mountainside in Chinsali District, Shambalakale farm was meant to be the retirement home of Zambia's first President Kenneth Kaunda. The mansion was built in 1971 by a Zambia Engineering and Construction Company (ZECCO).

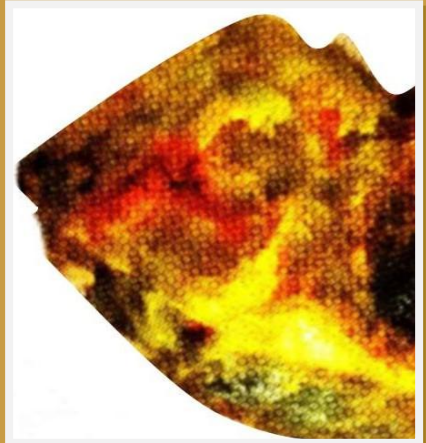


4.7.8 Traditional Culture

Muchinga Province has nine chiefdoms with rich traditional culture. Each chiefdom has its own unique traditional ceremony which includes: Chinamanongo ceremony for Senior chief Kopa, Bisa Malaila for Chief Nabwalya, Vikankaniba for Chief Muyombe, Chambo Chalutanga for Chief Mwenechifungwe, Namulinda for Chief Mwenewisi, Insonge for Chief Chibesakunda, Mulasa for Chieftainess Nawaitwika, Ng'ondo for chief Kafwimbi.

4 Mining Sector

The province has rich mineral deposits. Gemstones like emeralds, Manganese, phosphate, rare earth minerals and graphite appear to be abundantly found in Mafinga, Isoka, Mpika, Lavushimanda districts and these are mainly mined at a small illegal scale level.



4.4 Traces of precious minerals in the province

It is also believed that Isoka, Lavushimanda, Mpika, Mafinga Districts has traces of gold and diamond and what is needed is for the Ministry of Mines to assess the quality of these minerals



Traces of precious minerals in the province



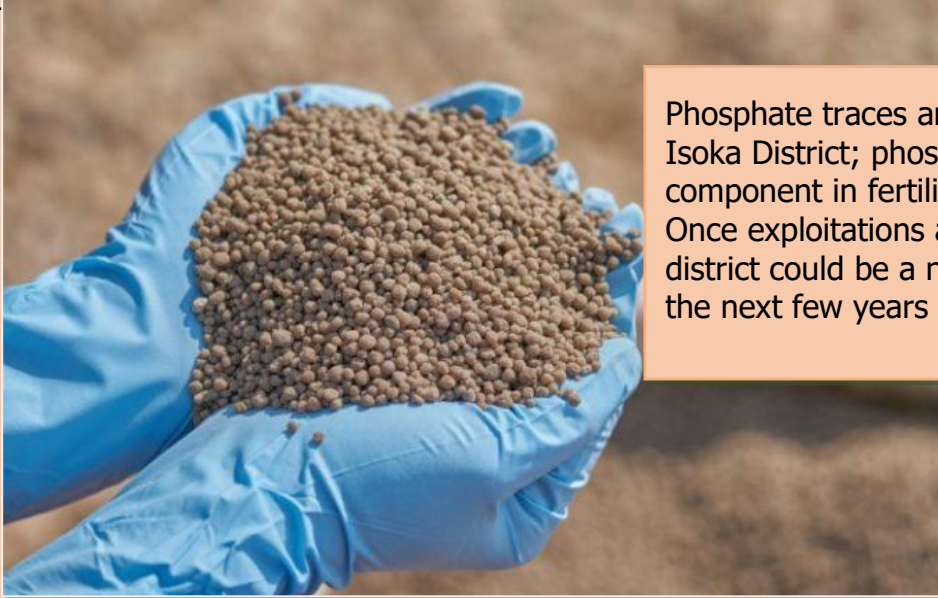
Exploration of coal in Mafinga district (Mukutu Ward) by SANHE Coal Exploration Company Ltd was done but no mining has commenced to date

Sample of coal discovered by SANHE coal exploration Company in Mukutu Ward in Mafinga District

4.6 Manganese Ore Lavushimanda District

The district has rich deposits of manganese ore which is mined illegally and transported to Serenje and Mkushi for processing.

4.7 Phosphate traces in Isoka District



Phosphate traces are also found in Isoka District; phosphate is a major component in fertiliser production. Once exploitations are done, Isoka district could be a new mining town in the next few years

4.8 Rare Earth Elements (REE)

Rare Earth Elements (REE) at Nkombwa Hill swings into full-scale production. Rare Earth Elements (REE) are used in components for mobile phones and television sets.



Sample of Rare Earth Elements (REE) at Nkombwa Hill in Isoka District

4.9 Traces of Copper in Mpika District



Mpika district has traces of copper and a number of firms have carried out exploration activities, although no serious mining firm has shown interest so far.

Sample of Copper ore in Mpika District

5.0 Tax Incentives Government is Promoting through Provincial Administration

The 8NDP has highlighted the following key drivers to achieve Economic Transformation: Agriculture, Mining, Manufacturing and Tourism supported by Transport and Logistics, Energy, ICT and Research & Development (R&D). To release the above government through Provincial Administration is providing incentives to the potential investors which include: -

5.1 Under S.I. No. 17 of the ZDA Act No.11 of 2006 the tax incentives are as follows:

- 0% import duty on the importation of capital equipment and machinery.
- Accelerated depreciation on capital equipment and machinery

5.2 Under S.I. No. 17 of the ZDA Act No.11 of 2006 the Companies qualify for tax incentives if they meet the following criteria:

- Priority sector
- Investment thresholds
- Location

5.3 Particularly, for manufacturing the project must be:

- Rural area
- Multi Facility Economic Zone (MFEZ)
- Industrial Park

5.4 Under S.I. No. 17 of the ZDA Act No.11 of 2006 the following are the priority sectors:

a. Agriculture

- Corporate tax at 10%
- 0% import duty on the importation of agricultural equipment and inputs.
- Profit from the production of organic or the chemical fertilizer is at 15% for an unlimited duration.

b. Tourism

Duty free importation of the following:

- Helicopters and micro-lights for use in the tourism sector;
- Stoves, ranges, grates, cookers (including those with subsidiary boilers for central heating), barbecues, braziers, gas-rings, plate warmers and similar nonelectric domestic appliances, and parts thereof, of iron or steel for gas and other fuels; Industrial or laboratory furnaces and ovens, including incinerators, non-electric. - Furnaces and ovens;
- Refrigerating or freezing equipment for cold rooms.
- The fifteen (15) percent customs duty on safari game viewing vehicles, tourist buses and coaches when imported by accommodation establishments, convention centres and tourism enterprise.

c. Manufacturing (Multi Facility Economic Zone (MFEZ) or Industrial Park Incentives)

Investors that set up in a Multi Facility Economic Zone (MFEZ) or Industrial Park are eligible for additional tax incentives:

- Zero percent tax on dividends declared on profits made on exports from first year of commencement of works, for companies in a Multi Facility Economic Zone or Industrial Park, for a period of 10 years

- For years 11 to 13 only 50 percent of profits to be taxed and;
- For years 14 and 15, only 75 percent of profits to be taxed

Please note: an investor can apply to have an area declared by the Government as an MFEZ

d. Manufacturing (Incentives out of the MFEZ)

- 0% import duty on the importation of capital equipment and machinery
- Accelerated depreciation on capital equipment and machinery
- Suspension on import duty of inputs required in the manufacturing process

e. Mining

- Dividends declared by persons carrying on mining operations are taxed at zero (0)% for an unlimited duration.
- Corporate income tax for processing of copper cathodes is at a reduced rate of fifteen (15) percent.

6.0 Additional Information to the Investors

Muchinga Provincial Administration in collaboration with government Ministries and Agencies will further facilitate the following:

- a) Acquisition of land for investment projects.
- b) Acquisition of trading licenses
- c) Work permits
- d) Processing of title deeds
- e) Acquisition Mining licenses
- f) Acquisition Power purchasing agreement in cases of power production and
- g) any other incidental to a foregoing

Contact Details

Hon. Henry Sikazwe (MP)
Provincial Minister- Muchinga Province
+260 977 610174

Mr. Henry Mukungule
Permanent Secretary
Muchinga Province
+260 977 350 841

Mr. Kamenda Mataa
Expo Coordinator
Provincial Administration – Muchinga Province
+260 977 119 420

Ms. Sandra M. Kambuleki
Expo Co-Coordinator
Provincial Administration- Muchinga Province
+26097 1555118

Email. muchinga.expo@grz.gov.zm or ppumuchinga@gmail.com

Website: www.muc.gov.zm/expo



MUCHINGA
expo

**3RD - 8TH
OCTOBER, 2023**

**"PROMOTING INVESTMENT FOR A GREEN
AND HEALTHY ENVIRONMENT
THROUGH SUSTAINABLE DEVELOPMENT**